

Women's Voice and Local Ownership

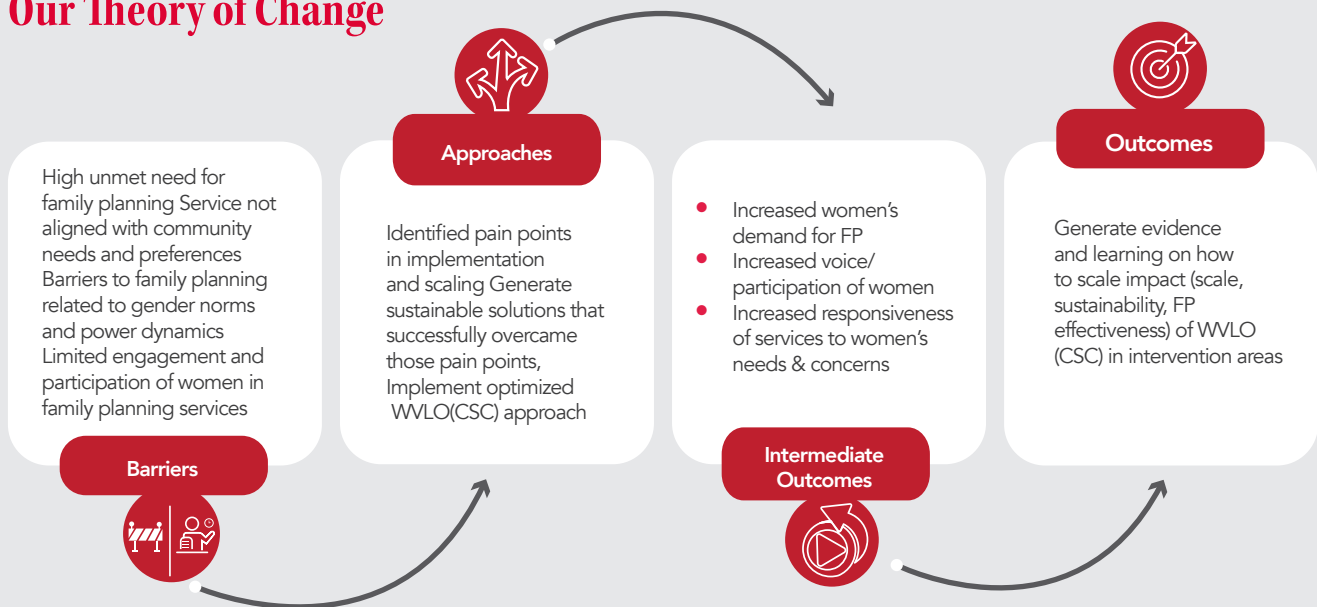


Background

Health system governance of Ethiopia recognizes the key role of accountability in leadership, governance, and multi-sectoral collaboration. Accordingly, the MoH has developed a Community Score Card (CSC) system to improve the accountability of the health system by enabling communities to measure the performance of health facilities and provide feedback on the quality of care including family planning services. Over the next four years, between August 2023 and July 2027, our goal is to design and implement an optimized CSC approach to support demand for, and responsiveness of, Family Planning services in three regions of Ethiopia. The project aims to generate evidence on how to optimize and scale women's voice and local impact. Led by Amref, this initiative is implemented by a consortium of partners; Progress Integrated Community Development Organization (PICDO), WE-Action and MERQ Consultancy.



Our Theory of Change



Primary Outcomes

1

Scaling of WWLO impacts is governed and coordinated through equitable stakeholder participation

2

User-centered evidence and learnings generated on scaling WWLO impacts

3

Increased WWLO impacts (voice, influence, health system responsiveness) in project areas.

Approach

Our approach entails collating evidence on how to optimize the current Ministry of Health (MoH) Community Scorecard (CSC) approach for magnitude, sustainability and contributing to a variety of outcomes including family planning services and equity resulting in positive health outcomes in Ethiopia. We will use co-designing, gender transformative and social inclusion approaches in our programming throughout all project phases. During our co-design phase, through equitable stakeholder participation, we will identify barriers, opportunities and potential solution to improve the MoH CSC model. We will then implement and test the co-designed solutions to scale the project scale impact, and finally consolidate and disseminate our learnings.