



# A Partnership that Makes a Difference in Communities

OUR INTERVENTIONS SUPPORTED BY THE  
DUTCH GOVERNMENT AND PRIVATE PARTNERS

Amref Health Africa in Ethiopia



## Who We Are

Amref Health Africa is the largest African-based and led international health development organization serving over 30 million people annually across 35 countries in sub-Saharan Africa. Amref has been active in Ethiopia since the 1960s and became fully operational as of 2002. We have been partnering with the Ethiopian government and local communities to co-create solutions and implement diverse health and development project portfolios throughout the country for over twenty years.

Our organization is driven by its vision to bring lasting health change in Africa and its mission to catalyze and drive community-led and people-centered health systems while addressing social determinants of health. Amref strives to ensure that health systems are functioning at an optimal level and communities are empowered to hold these systems accountable for the delivery of high-quality and affordable health care. Our programs are designed to support community level interventions while strengthening health systems at the regional and national levels.

Our Ethiopia office is nested within a globally networked organizational structure supported by North American and European offices, including Amref Flying Doctors Netherlands. Since 2004, Amref Flying Doctors in the Netherlands has been providing program development support backstopping our portfolio, and working to improve the health of people in Africa, including Ethiopia. The Amref Flying Doctors staffs raise program funds, increase public and political awareness among the Dutch Government and private companies and advocate to mobilize more resources for our interventions in Ethiopia.

More information: [www.amref.nl](http://www.amref.nl) and [www.amref.org/ethiopia](http://www.amref.org/ethiopia)

## Our Programs

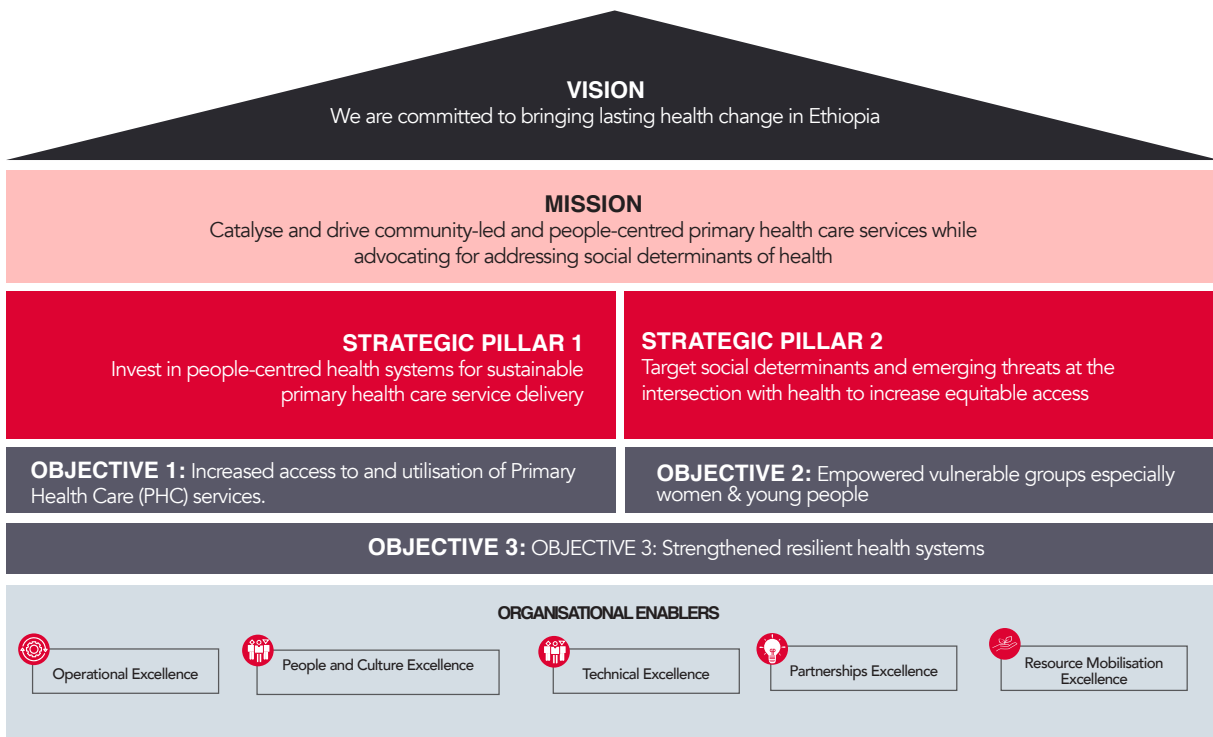
As we reflect on the past year, we are excited about the progress we've made toward improving health systems and the lives of communities in places where we operate. Our commitment to community-centered interventions and strengthening health systems at all levels has driven meaningful change. Our commitment to innovation, community impact, and sustainability continues to drive our mission forward.

In 2025, our portfolio includes diverse projects in 336 districts across all regions of the country. Collectively, these projects push forward sustainable development goals and integrate various sectors. Yet, there is still much work to be done to ensure that health systems function optimally, and that communities are empowered to hold these systems accountable for high-quality and affordable care.

Guided by clear strategic priorities, strengthened primary health care that can withstand shocks, from climate stress to financial uncertainty, data and insights, resource mobilization, financial viability, and operational excellence, we are reshaping how we deliver impact, more efficiently and with greater accountability.

Our commitment to the communities we serve remains unwavering. With the dedication of our staff and the continued partnership of government and donors, we move forward with resolve, inviting you to stand with us in advancing lasting, community-led health and development outcomes across Ethiopia.

## Amref Health Africa in Ethiopia Country Strategy 2023-2030

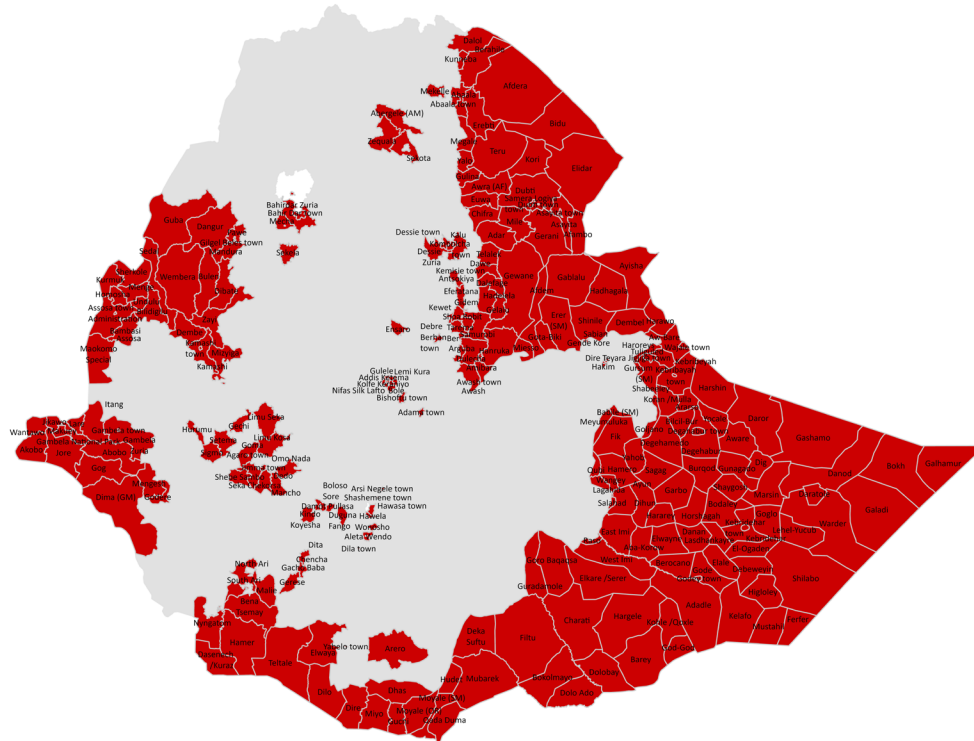


## Our Program Focus Areas

- Reproductive, Maternal, Neonatal, Child, Adolescent & Youth Health and Nutrition
- Health Systems Strengthening
- Youth Development
- Water, Sanitation and Hygiene
- Disease Prevention and Control

# Where We Work

We intentionally and effectively implement diverse health programs across the country in 12 regional states and two city administrations



## Key Achievements 2025



**5.4 Million**  
people reached



**366**  
Districts covered



**406**  
Health centres &  
hospitals supported



**6,374**  
Health workers  
trained



**3,260**  
Youth and women  
trained on business &  
entrepreneurship skills



**760**  
Youth and women with  
job & employment  
opportunities created

# Our 2025 Highlights

## A New Platform for Evidence and Insight: The Amref Insight Hub

In 2025, Amref Health Africa launched the Amref Insight Hub ([www.amrefinsighthub.org](http://www.amrefinsighthub.org)) as a public platform dedicated to strengthening learning, knowledge sharing, and evidence-informed decision-making across health and development. The Insight Hub brings together evaluations, analytical products, program insights, and impact evidence from Amref's work, presented in accessible and policy-relevant formats to support governments, partners, practitioners, and funders.

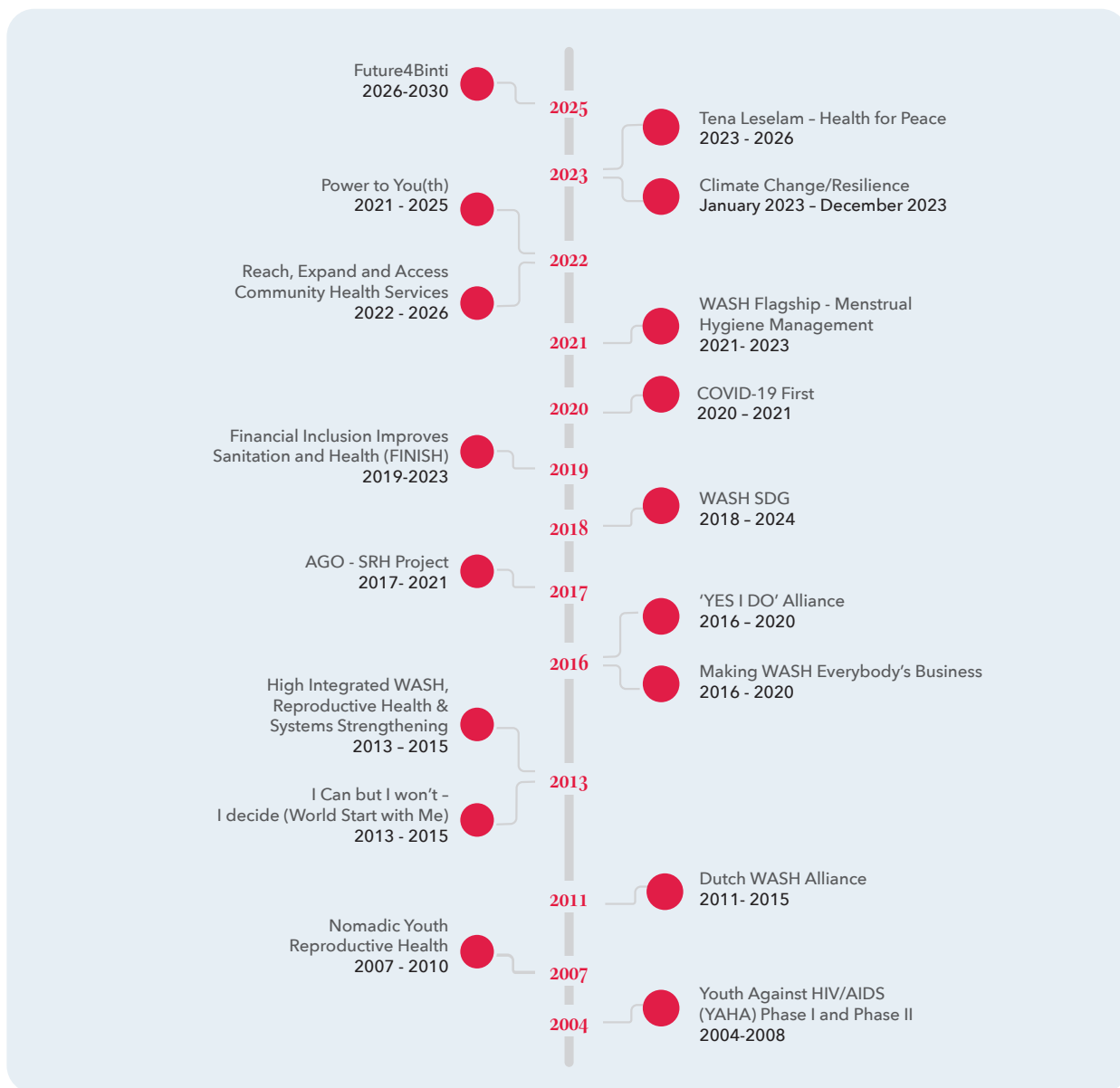
The Hub is designed to support continuous learning and more effective use of evidence. By consolidating data and insights across thematic areas, including primary health care, SDG-3 acceleration, immunization, RMNCAYH-N, WASH, digital health, and youth development, it enables stakeholders to identify patterns, compare approaches, and understand what works across different contexts. This shared knowledge base supports better prioritization, adaptive planning, and more informed policy and investment choices.

Beginning in Ethiopia and potentially expanding in 2026, the Amref Insight Hub strengthens how evidence and learning are used to guide decisions and improve outcomes ensuring that knowledge generated through implementation continues to inform more resilient, people-centred health systems.

The screenshot shows the Amref Insight Hub website. The header is black with the Amref Health Africa logo on the left, the text 'INSIGHT HUB Amref Insight Hub' in the center, and 'About Projects' on the right. There are 'Explore' and 'Login' buttons in the top right corner. The main content area has a light pink background with the title 'Insight-led Impact' and the subtitle 'Trusted insights, told through data, stories, and visuals.' Below this is an 'Explore' button. The 'Featured' section contains three cards: 1. 'INSIGHT' card titled 'Amref Health Africa: Transforming Health for Women and Youth in Ethiopia 2010–2025' with a 'Read more' link. 2. 'ARTICLE' card titled 'Impact of the health bazaar initiative on sexual and reproductive health service use in Ethiopia' with a 'Read more' link. 3. 'INSIGHT' card titled 'SDG-3 Acceleration Roadmap' with a 'Read more' link.

# Partnering for Lasting Health Change in Ethiopia

Amref Health Africa has worked closely with the Dutch Government and private sectors to deliver health interventions to communities throughout Ethiopia since 2004. Our programs echo the vision of the international agenda—acting in collaborative partnership to achieve progress towards sustainable development goals by 2030. Overall, our programs take a particular interest in integrated service delivery that includes sexual reproductive health, clean water and sanitation, gender equality, economic growth, governance and engaged partnerships to ensure health and well-being for all Ethiopians.



# Future4Binti

Amref Health Africa in Ethiopia, together with Plan International and local civil society organisations, and in collaboration with the Governments of Ethiopia, Kenya, and Somalia, implements Future4Binti, a five-year regional programme (2026–2030) supported by the Dutch Ministry of Foreign Affairs. Building on proven approaches and lessons from earlier initiatives advancing girls' rights and gender equality, Future4Binti aims to prevent and respond to female genital mutilation (FGM) and child, early and forced marriage (CEFM) by addressing the deep-rooted gender inequality and power imbalances that sustain these harmful practices.

The Project targets not only girls, but also families, communities, health systems, and national and sub-national government structures. In Ethiopia, implemented by Amref Health Africa, Plan International, and four local CSOs in Afar, Somali, Oromia, and Amhara, the Project will contribute to lasting change by shifting harmful social norms, strengthening protection mechanisms, expanding access to quality, survivor-centred health and psychosocial services, and supporting effective implementation of laws and policies that protect girls and women. Frontline health workers and responders will be strengthened to improve prevention, identification, referral, and care, including better-coordinated reporting and referral pathways.

Recognising that harmful practices can cross national borders when enforcement differs, Future4Binti will work simultaneously across Ethiopia, Kenya, and Somalia to enhance regional coordination and align protection systems so girls are safeguarded wherever they live. The proje prioritises locally led implementation, directing significant funding to grassroots organisations to facilitate community dialogues with elders, religious leaders, and parents; support safe spaces and protective services for girls at risk; engage boys and young men as allies; and empower girls and youth to exercise leadership and advocate for change. Through this collective, regional approach, Future4Binti will help scale what works and accelerate progress where protection is needed most.



# Reach, Expand and Access Community Health Services

Reach, Expand and Access Community Health services (REACH) is an integrated Sexual & Reproductive Health & Rights (SRHRs), Menstrual Hygiene Management (MHM), and Water, Sanitation and Hygiene (WASH) and Nutrition project.

Implemented by a consortium of Engender Health Ethiopia (lead), Amref Health Africa and DKT Ethiopia in Jimma and Borena zones of Oromia Region, the project works to ensure women and young people have access to integrated health and WASH services.

## Key Achievements to-date



67,187

Confirmed Referrals



12,003

Improved household sanitation facilities



195,019

People Accessed safe water supply



149,275

People Accessed improved and inclusive sanitation facilities



80 Schools and surrounding communities accessed safe water supply

71 Schools accessed improved and inclusive Sanitation services

34 Schools accessed menstrual hygiene management services



## Bridging the Gap: REACH Project Brings Safe Water to Doorstep

Genet is a 60-year-old mother of three who lives in Jimma zone, Gomma woreda. She would walk over a kilometer and make multiple trips daily to fetch clean water. For the past many years, the lack of accessible safe water caused illness in her family, and the burden of collecting water, combined with her other responsibilities and physical limitations, made her life difficult.

Through our 'Reach, Expand, and Access Community Health Services (REACH) project, which, as part of its integrated initiative, built water points, installed water tanks and pipelines, Genet and her family now have clean and safe water near their house. "We didn't believe it was true," Genet said when she saw the flowing water. "It felt like a dream."

Since 2022, our REACH project has created access to safe water supply for more than 125,000 people, improving their health, reducing the burden on women and children, and giving them hope for a better future.



# Power to You(th) Ethiopia



Power to You(th) was a five-year (2021-2026), the Dutch Ministry of Foreign Affairs funded global program implemented in seven countries: Ethiopia, Ghana, Kenya, Indonesia, Malawi, Senegal, and Uganda.

Implemented in partnership with Amref Health Africa in Ethiopia (Lead), Youth Network for Sustainable Development and Hiwot Ethiopia in Amhara and Afar regions, the Power to You(th) Ethiopia worked to empower adolescent girls and young women to increase their agency, claim their rights, address gender inequalities, challenge gender norms and advocate for inclusive decision-making related to child marriage, female genital mutilation/cutting, sexual & gender-based violence (SGBV) and unintended pregnancies.

We mobilized public support, advocated for the enhancement of policies and legislation, and empowered civil society to amplify the voices of young people, enabling them to assert, safeguard, and extend their civic rights. We adopted an innovative gender-transformative approach as well as meaningful and inclusive youth participation strategy, which equipped both youth leaders and Civil Society Organizations (CSOs) to effectively address the critical issues at hand.

## Key Achievements



**16,892**  
Youth trained



**168,682**  
Youth reached with  
SRH education



**220** Policy &  
decision makers  
reached



**29** CSOs  
strengthened



**6** Studies  
conducted



**182** Child  
marriages prevented



**82** Female genital  
cutters stopped  
cutting



**128** Young people  
participated in policy  
and decision-making

## From Possibility to Power: The Rise of Arami's Youth

In the heart of Afar, young people are turning resilience into real change. What began as life skills and leadership training through Power to You(th) has become a movement, one that's rewriting the future. Arami's youth are not just escaping the grip of early marriage, FGM, and substance abuse; they are building businesses, managing farms, running recreational centers, and daring to dream of becoming a full-fledged CSO. They are no longer waiting for change. They are the change.

"The youth in my region have come a long way. Despite many challenges, our hard work has rewarded us economic opportunities that allowed us to be financially independent, reducing reliance on our families and helping us avoid migration and substance abuse. Through different life skill trainings and trainings from Power to Youth, we are empowered with the ability to communicate effectively with higher officials and raise our voices on important issues such as early marriage, FGM and GBV. We are actively working on job creation and have learned how to use our free time by generating income. Today we manage a recreational center and an agricultural farm, benefiting both ourselves and the youth in our community. We have a dream of becoming a CSO and doing even greater things expanding our impact even further in the future."



# Tena Le-selam

'Tena Le-selam' — meaning 'Health Care for Peace' — is a three-year initiative dedicated to improving the health and nutrition of women, children, and adolescent girls in conflict-affected districts of Ethiopia's Amhara region.

The project places a strong focus on women, children, and youth not only because they are among the most vulnerable in times of crisis, but also because they are powerful agents of change in building healthier, more peaceful communities.

Through a set of targeted activities, Tena Le-Selam aims to:

- Reduce the adverse effects of conflict on health and nutrition
- Create safe, supportive environments for recovery and resilience
- Amplify the positive momentum of ongoing development efforts across the region

The Project invests in restoring and strengthening health systems in post-conflict communities in the Amhara region, rebuilding facilities, improving access to essential services, and empowering communities to recover and build a more resilient future.



## Key Achievements

**Maternal Health:** Maternal services rebounded strongly, with postnatal care (PNC) showing the fastest recovery.

- **32,177** skilled birth attendances
- **27,367** women completed four or more ANC visits
- **33,550** PNC visits conducted

### Health-seeking behavior and GBV prevention:

increased service utilization, improved early referral of GBV cases, strengthened community–facility trust, and shifting social norms toward positive health behaviors.

- **304** community Anti-GBV alliance members strengthened
- **283** religious and community leaders engaged in anti-GBV advocacy
- **96** community dialogue sessions conducted to improve health-seeking behavior and early referral of GBV cases.

**Child Health:** Life-saving child health interventions more than doubled as outreach, supply chains, and facility readiness were restored.

- **29,366** children fully immunized before age one
- **29,133** diarrhea cases treated with ORS and zinc
- **14,415** under-five children screened for MAM
- **3,262** under-five children screened and treated for SAM

**Infrastructure & Equipment:** Ensuring communities have access to safe, functional, and quality maternal, child health, and GBV services.

- **8** health facilities rehabilitated- improving service delivery
- **1** One-Stop Center constructed to provide integrated GBV services
- **3** facilities connected to the public water supply
- Essential MNCH equipment restored in 8 health facilities

**Workforce Strengthening:** Health facilities fully functional, improved quality of ANC, delivery and PNC services, stronger GBV response systems, and enhanced infection prevention and continuity of care.



- **769** health providers trained on different need based RMNCH topics
- **16** facilities mentored and quality audits conducted
- **8** outreach sessions delivered to hard-to-reach communities

**Youth Engagement:** Youth positioned as recovery actors, strengthening social cohesion and sustaining community resilience.

- **200** Youth trained on life skills, entrepreneurship, and livelihood development, providing practical competencies in business planning, financial literacy, and resilience, followed by seed funding and support to launch income-generating activities (IGAs) and access employment opportunities.

## Making Health Centers A Safe Haven for Mothers

Kemisse Health Centre is a trusted and welcoming facility offering comprehensive care to expectant mothers from the final stages of pregnancy through delivery. The Centre provides not only medical support but also a warm, reassuring environment, helping women navigate childbirth with confidence and peace of mind.

Through the Tena Le-selam project, the Maternal and Child Health block has been renovated and equipped with essential medical tools to improve maternal, neonatal, and child health services. The project also includes capacity-building efforts, training midwives and nurses in life-saving skills to ensure top-quality care.

Saida Seid, 38 weeks pregnant and admitted to the Centre for labor-like symptoms, shares her experience: “As it is my first pregnancy, I was stressed, but now I feel at ease because I’m under the great care of the health workers. They check on me frequently and treat me with kindness.”

Kemisse Health Centre is staffed by dedicated professionals, including three midwives and supporting staff, who provide personalized care tailored to each woman’s needs. One of them, Melaku Belay, trained by Amref, says the Centre handles 5 to 8 deliveries daily and emphasizes continuous care beyond childbirth.

“Our support doesn’t end in the delivery room,” says Melaku. “We provide postnatal services, including breastfeeding support and follow-ups, to ensure mothers feel confident and well-supported as they begin motherhood. Our care combines evidence-based practices with respect for each woman’s birth plan.”

The Centre also fosters a sense of community, where mothers can connect, share experiences, and support one another. With its goal of a “home delivery-free” community, Kemisse Health Centre is helping to create safer childbirth experiences for all women in the area.

More broadly, Amref Health Africa’s Tena Le-selam project has renovated eleven health facilities and equipped them with vital tools.





# WASH SDG - WASH Alliance International Ethiopia

The WASH SDG Programme responds to the Dutch commitment to contribute to the Sustainable Development Goals, particularly SDG 6, with the aim to reach an improved WASH situation for all.

The Programme aimed to sustainably deliver access to, and use of, safe drinking water; and improve access to, and use of, sanitation and improve hygiene behaviours in seven countries in Africa and Asia.

The overarching goal of the program was to improve WASH services accessibility for all, especially targeting marginalised communities, including those in urban slums and remote areas. It employs an integrated approach, aiming for sustainable, climate-resilient, gender-sensitive, and socially inclusive water and sanitation services with improved hygiene practices.

In Ethiopia, implemented over five years, the WASH SDG Program was built on three core strategic objectives:

- Increasing demand for improved WASH facilities and practices
- Improving the quality of service provision
- Improving WASH governance and institutional framework in the sector

With two sub-programs led by WASH Alliance International (WAI) and PLAN International, WASH SDG was implemented in Negelle Arsi of Oromia region and Bahir Dar Zuria and Lasta districts of Amhara region. The WAI sub-program wing was implemented by a consortium of Amref Health Africa, Bole Baptist Biblical Church (BBBC), Wetland International (WI), IRC WASH and AKVO.





## Key Achievements



**>110,000** people reached with improved and safe water supply



**>20,000** households in 20 kebeles triggered and constructed household latrines, achieving ODF, including 20 schools



>ETB **25** Million in-kind and labor contribution from government and local communities for construction of water facilities



Nearly **48** water points with six faucets & five new multi-village water supplies constructed, three multi-village water schemes rehabilitated, 30 WASHCOs revitalized, capacitated & equipped



**>85,000** people reached with WASH and health education



Nearly **200** women group leaders and kebele leaders received training on Gender Equality and Social Inclusion(GESI) in WASH



**10** schools supported with Menstrual Hygiene Management initiative

## A Frontline Force for Change: A Mission to Transform WASH in Rural Ethiopia

Shemsya Hirpo, a dedicated Health Extension Worker (HEW) in the Negele Arsi district of Oromia Regional State, works tirelessly to protect and promote the health of her rural community.

Driven by frequent disease outbreaks, often the result of inadequate access to water, sanitation, and hygiene (WASH) services, Shemsya has made it her mission to provide extra care and consistent follow-up to ensure her community's wellbeing.

"Many of the health challenges we face stem from poor WASH infrastructure and cultural practices," Shemsya explains. "That's why this work requires strong dedication and continuous effort."

In addition to lacking improved water supply and sanitation facilities, Shemsya notes that her community struggles with limited awareness about the importance of proper hygiene and sanitation practices.

"The situation calls for targeted behavioral change interventions," she emphasizes. "We must address both infrastructure gaps and the deep-rooted behaviors that contribute to poor health."





It was during this critical time that Shemsya, along with other HEWs, received comprehensive capacity-building and behavior change communication (BCC) training focused on promoting improved WASH services. The training, delivered by Amref Health Africa and its partners through the WASH SDG Project, highlighted the importance of true behavior change in increasing toilet usage, improving hygiene practices, managing water supply systems, and fostering collective action.

“As frontline health workers, we were introduced to WASH marketing approaches, particularly how to generate demand for improved sanitation,” says Shemsya.

The project empowered Shemsya and her colleagues to serve as key facilitators at the village level, organizing efforts and creating an environment that encourages community engagement around WASH.

“The support we received from the WASH SDG Project has significantly enhanced our ability to connect with the community,” she adds. “It’s brought about real change—people now understand the importance of improved latrines, good hygiene, and proper water management.”

The WASH SDG Project was implemented for about five years by Amref Health Africa in collaboration with the WASH Alliance International (WAI) in Shashamane and Arsi Negelle districts. The project targeted communities with limited access to safe water, sanitation facilities, and hygienic living conditions—working to ensure that people like Shemsya are empowered to lead lasting change from within.

# WASH Flagship - Menstrual Hygiene Management

As a follow-up to MWEB project (see page 27), Amref Health Africa successfully implemented a three-year (2021-2023) WASH Flagship Menstrual Hygiene Management (MHM) project funded by the Made BLUE and Amref Flying Doctors Netherlands. The project aimed to contribute to enhancing health and well-being of girls and women by promoting gender equality and rights, and reducing barriers to girl's education.

Aligned with the government priorities, the project intended to enhance access to sustainable WASH services, menstrual hygiene management (MHM) resources, school attendance of girls and women empowerment in urban corridors of Oromia region - Bishoftu, Modjo, Adama and Metehera towns, as well as in Addis Ababa Gullele and Yeka sub-cities.

Our key partners included Federal Ministry of Health, Ministry of Water and Energy, project area Regional/ City Health, Water, Education, Finance Bureaus and their respected city and sub-city level WASH actors.



## Key Achievements

### Access to WASH facility and MHM safe space

- More than 20,000 school girls accessed to WASH facilities including Menstrual Hygiene and Health (MHH) services
- MHM safe space and toilets constructed and renovated in public schools
- Nearly 10,000 people have access to community managed safe water supply
- More than 12,000 people living in urban slums accessed public and communal pay toilets and safe water services

### Capacity Building

- Nearly 6,000 people received capacity building training on WASH, Menstrual Hygiene Health (MHH), social accountability, advocacy for gender segregated toilets and addressing MHM needs in schools and work places
- 13 MHM safe spaces for schools, equipped with sewing machine and furniture for the production of reusable sanitary pads
- Reusable sanitary pad production started in 13 schools in intervention sites and 66 members of school communities trained on reusable sanitary pad production and create WASH business in schools

### Hygiene Sensitization and Promotion

- More than 170,000 people reached with hygiene education, including promotion on utilization of reusable sanitary pad and others

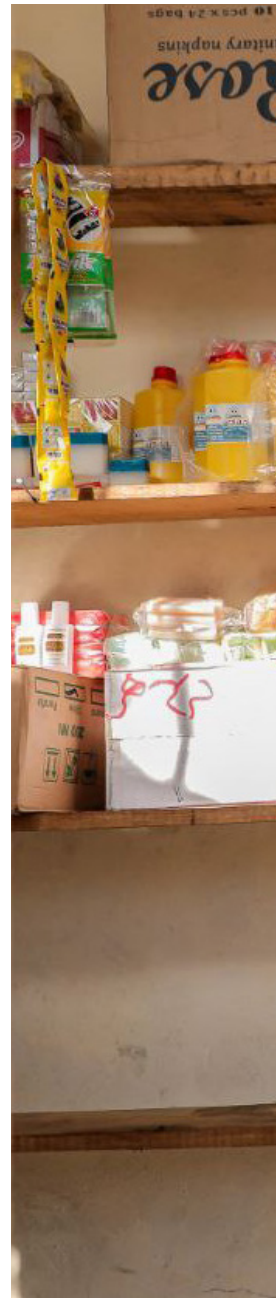
## From a House Maid to a Cashier for Public WASH Kiosk

Rehima Jemal, 22, is a single mother of one child. She lives with her parents in a cell like home in Modjo town. She would work as a house maid to raise her child and even support her parents. She had no any other means of livelihoods until the WASH Flagship MHM project came to the scene and constructed a public WASH kiosk by turning a landfill to a clean place where sanitation services are provided.

Organized as youth cooperative, Rehima and her friends got the opportunity to run the WASH Kiosk of six rooms including toilet, shower, and shop services and generate their own income. Rehima was trained and assigned as a cashier for the kiosk and plays a key role to support her cooperatives. With this role, she earns a monthly salary of ETB 2,400.

The facility provides toilet and shower services to 40-60 people a day and makes ETB 600 -1,000. And the daily selling from the kiosk is around ETB 800.

In addition to constructing the facility and providing start-up supplies like soap, shampoo, soft, and sanitary pads, the project, partnering with Job Creation and Health Offices, has provided training on WASH facility management, entrepreneurship, financial management, customer handling and life skills. Rehima and her friends aspire to expand their business by opening a mini café and generate more income.





# A'AGO - Improving Sexual and Reproductive Health Outcomes of Young People in Afar

The vastly arid Afar region of Ethiopia is one of the most underserved areas in the country when it comes to maternal, neonatal, and child health services. Intertwined socio-cultural factors, including deeply rooted harmful traditional practices such as Female Genital Mutilation/Cutting (FGM/C) have significantly contributed to poor health outcomes.

In response to these pressing challenges, Amref Health Africa in Ethiopia, with the support of the Embassy of the Kingdom of the Netherlands and in collaboration with its implementing partners implemented the A'ago ("hope" in Afar language) project that worked towards improving the sexual and reproductive health outcomes of adolescents and youth in Afar.

To achieve this, A'ago focused on three key objectives:

- Increasing demand for accurate sexual and reproductive health rights (SRHR) information and services among young people and within their communities
- Improving access to and quality of sexual and reproductive health services, especially those that are youth-friendly and culturally appropriate
- Strengthening the enabling environment so that adolescents, particularly girls and young women can confidently exercise their SRHR rights without fear of stigma or discrimination

## Key Achievements



> **43,000** People (17,000 youth) reached through comprehensive SRH services, training, and campaigns



**292** SRH service providers trained on youth-friendly services



**19** Latrines constructed (four in schools, eight in maternity waiting rooms in health centers and seven in youth friendly corners) constructed



## Standing Against Harmful Practices: Amina's Story

One afternoon, while walking home from school with her friends, 12-year-old Amina was abducted and taken nearly 60 kilometers away from her village in Sabure Woreda, Afar Region. Fortunately, thanks to the swift action of local police, the abductor was quickly identified and Amina was safely returned home.

Incidents like Amina's are not uncommon in Sabure Woreda. "The abduction rate here is very high, and people live in constant fear," said Derebe, a teacher at Amina's school. "That's why we had been conducting awareness campaigns to fight against abduction and other harmful traditional practices."

These local efforts are being supported by Amref Health Africa in Ethiopia, which has provided a range of capacity-building initiatives, including a school-based Comprehensive Sexuality Education (CSE) program. This program equips students, teachers, school staff, and community members with the knowledge and tools to advocate for their sexual and reproductive health and rights (SRHR), while challenging harmful norms and practices.

"The school director and four of us teachers received training to implement curriculum-based sessions that raise awareness and promote safe behaviors," Derebe shared. "This training empowered us to educate our students and mobilize the wider school community, including law enforcement, to stand against child abduction."

As a result of this collaborative effort, Amina's case became more than just an isolated incident, it became a catalyst for action. Her peers, teachers, family, and the local community united in condemnation of the abduction, reinforcing their commitment to protecting children's rights and safety.

"I'm proud to say that we've recently certified 45 students who have successfully completed the 16-lesson sexuality education training," Derebe said with pride.

"These young people are now better equipped to stand up for themselves and others."



# Making WASH Everybody's Business

Making WASH Everybody's Business (MWEB) was a five-year (2016-2020) project funded by Amref Flying Doctors Netherlands and Aqua for All. The project worked to ensure sustainable access to water and sanitation for those living in informal settlements in areas of Addis Ababa, Afar, and Oromia by building the skills of entrepreneurs and facilitating investment in small-scale enterprises and household level construction of WASH facilities through seed capital and microfinance institutions.

## Key Achievements

**>100,000** people reached with hygiene and sanitation education

**36** school WASH clubs established and supported

**37,500** Euros in loans provided by five microfinance Institutions/banks for community WASH services



## A Journey Toward Dignity in Education: Tigist's Story

Tigist Sisay, 14, lives in Adama town, Oromia Regional State, and attends Grade 8 at Logo Primary School. She loves learning and rarely misses a class, except when household responsibilities, like fetching water, get in the way.

But there's one thing that dims her enthusiasm for school: the toilet facilities. Her school has only one toilet block shared by hundreds of students and even teachers. It lacks doors, privacy, and cleanliness. "We girls never go alone," Tigist explains. "We take turns guarding each other while the other uses the toilet."

The situation becomes even more difficult during menstruation. "When my period starts at school, I can't focus. The facilities aren't safe or private. Sometimes I just go home and miss several days," she says.

Recognizing the urgent need for improved sanitation, Amref Health Africa stepped in to support the school. They constructed new toilet blocks equipped with running water, separate facilities for boys and girls, and private rooms with showers to help girls manage their menstrual hygiene.

"The new toilets changed everything," Tigist says with a smile. "Now we have privacy. We can change our sanitary pads and wash without fear. I feel proud to go to school again. Thanks to Amref, we girls can finally focus on learning without worry."



# Financial Inclusion Improves Sanitation and Health Project

Financial Inclusion Improves Sanitation and Health (FINISH) (2019-2023) was initially a one-year project funded by the Dutch Ministry of Foreign Affairs, which was later awarded additional resources in 2020 to scale-up this successful model over the next four years.

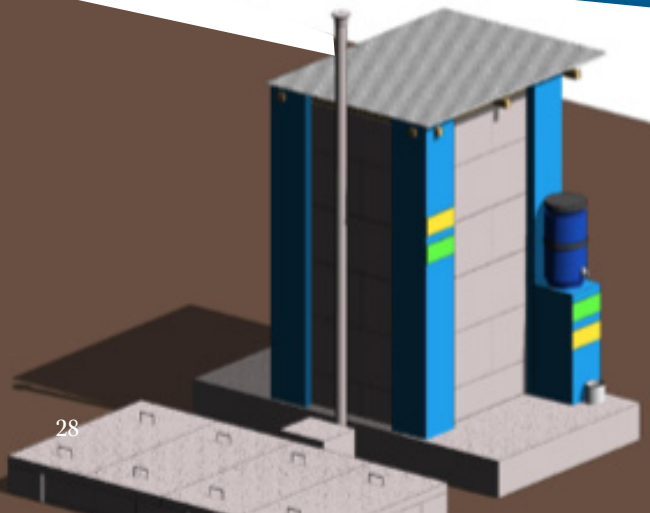
In partnership with the Bole Baptist Bible Church, the project targets communities to sustainably expand demand and access to safe sanitation facilities for households in the Oromia region.

The approach stimulates sustainable economic growth by creating local markets for sanitation enterprises and facilitating access to loans from microfinance institutions for small businesses and households.

## Key Achievements

**8,483** Improved sanitation facilities constructed

Nearly **255,000** Euros leveraged to facilitate the construction of improved sanitation facilities



## **A Journey to Sanitation and Dignity: Financial Inclusion for Sanitation Empowers Household to Invest in a Safer Latrine**

With support from sanitation marketers through the FINISH project, Zelekash Mamu saw an opportunity to invest in something that would greatly improve her family's daily life: a safe and dignified toilet. For years, her household had relied on a makeshift pit latrine with a wooden seat, an unsafe, unsanitary, and uncomfortable setup.

"The pit we had was about to collapse. It was just made of wood," Zelekash recalled. "It had holes everywhere and attracted flies. At night, my children didn't even want to use it. They would use plastic bags instead and throw them into the ditch early in the morning."

This unsafe situation wasn't just inconvenient, it was putting her family's health at risk. Zelekash and her children frequently suffered from diarrheal diseases, leading to costly medical expenses every six months.

Determined to make a change, Zelekash decided to build a durable toilet with double pits and a pour-flush system, costing 12,805 ETB. As a member of a Savings and Credit Cooperative Organization (SACCO) in her village, she was able to access a loan of 13,000 ETB to make her plan a reality.

"Now I proudly have a beautiful toilet," Zelekash said with a smile. "Even my neighbors come to visit and ask where they can get the same service."

Zelekash's story shows how combining sanitation promotion with financial inclusion enables families to break the cycle of poor hygiene and illness. Through targeted support and access to affordable financing, households like hers are now able to invest in safe, dignified, and lasting sanitation solutions.



# Highlights of Our Public – Private Partnership

Amref Health Africa, Amref Flying Doctors Netherlands and Philips Health Care Africa began a strategic partnership to improve health care in Africa in 2013. Since then, we have been collaborating, developing, testing and rolling-out innovative solutions for improving access to care through joint projects in Ethiopia and Kenya.

Our collaboration is quite unique - a private and not-for-profit organization have built a longstanding relationship to work towards the same mission, offering communities and strengthening health systems, by offering complementary capabilities and services. Our success is mainly driven by bringing entrepreneurship in developing models around quality and affordability – value-based care for all in line with the principle of universal health coverage.



The A'ago project in Afar region of Ethiopia was a great example of this partnership, where a comprehensive suite of maternal and child health equipment, available at the lowest point of service delivery, has increased the quality of care we provide to women and children in rural and hard to reach settings. Our results have been very encouraging in boosting health service utilization and client satisfaction as we came up with innovative technologies that are affordable to remote regions of Ethiopia. We look forward for continued partnership with the Dutch private sectors as we work towards lasting health changes in Ethiopia.

Samrawit Teka, 26, is a clinical nurse at Worer Health Center in Amibara Woreda, located in Ethiopia's Afar Regional State. As part of Amref Health Africa's support to strengthen primary healthcare, Samrawit and her colleagues received the Philips Back Bag, an innovative, state-of-the-art toolkit equipped with modern healthcare devices.

This mobile health kit has significantly enhanced the capacity of healthcare professionals to conduct routine checkups both within the health facility and during community outreach activities. The support has contributed to improved quality and accessibility of healthcare services at the primary health care units, enabling health workers like Samrawit to reach more people with essential health services closer to where they live.



# Community Participatory Research to Inform Program Design and Implementation

## Amref Representative Advisory Group (ARAG) Impact Study

Amref Flying Doctors and Amref Health Africa are committed to supporting and uplifting young women in Ethiopia. The input of women is invaluable, and their participation is critical to our intervention design and program delivery. To better understand and support the needs of young women, we designed and deployed a five-year study to listen to and document the health and quality of life related experiences of young women in Ethiopia. These women are representatives of the ARAG and continuously inform and build the design of our programs.

The impact study employed a comprehensive framework to explore the experiences of about 500 women between the ages of 15 to 49 years old in select areas of Addis Ababa, Amhara, Afar, and SNNPR. We conducted annual quantitative surveys to assess SRH and WASH related changes over 20 years. Survey findings were coupled with participatory group discussions to listen to the feedback of participants from the communities.





# Key Findings

Overall, young women in the study areas have witnessed significant changes in health outcomes and health service delivery over the past twenty years. Our findings suggest that participants have increased knowledge and awareness of health topics and that overall health status has improved.

Community level health education by HEWs and agents of Women's Development Armies (WDA) has notably contributed to increased knowledge and awareness. Improvements to health infrastructure were noted, including increased construction of health centers, youth centers, and sanitation facilities. Additionally, the performance of the health extension programme (HEP) through health centers and health posts supported increased access to health services, and decreased harmful traditional practices and use of traditional birth attendants (TBA) for home delivery.

Some of the negative changes over the last 20 years observed by study participants include impacts of rapid urbanization and climate change. Participants noted increased environmental stressors such as drought, floods, and locust plague. Although urbanization has provided people with better access to electricity, water, and telecommunication, congestion and limited transportation options were reported as negative changes.

*"In the past, our children used to move to different places and girls used to drop out of school and would be forced to get married, but now we are accessing school nearby and children are encouraged to continue their education"*





*“In the past, women long distances to fetch water for drinking and cooking purposes but now we are getting clean water nearby and water-borne diseases like diarrheal, and other diseases have declined including trachoma”*

Most study participants recognized Amref Health Africa in Ethiopia for its contributions to supporting, building, and strengthening health facilities across the study areas. In some areas, Amref Health Africa in Ethiopia was also mentioned for its role in improving WASH facilities, training health workers, and facilitating changes to harmful practices in the community.

In all, the findings provided valuable information that enables Amref Health Africa in Ethiopia to better understand and represent the needs of young women and their communities. Amref Health Africa in Ethiopia is committed to participatory programming and integrating the voices of the communities it serves into program design and implementation.

# Our Aspiration

At the heart of Amref Health Africa's work is a strong commitment to ensuring the right to health, well-being, education, and economic empowerment for all Ethiopians, especially women and young people. This commitment is shared by our partners and drives our aspiration to build people-centered health systems that support sustainable primary health care (PHC). We also address social determinants of health and emerging threats that impact equitable access.

We aim to achieve this through three strategic objectives:

1. Increase access to and use of primary health care services
2. Empower vulnerable groups, particularly women and young people
3. Strengthen community health systems, including public health emergency preparedness

To realize these goals, Amref is making critical investments, both programmatically and operationally to drive technical excellence, strong partnerships, operational efficiency, and effective resource mobilization. These investments are essential to achieving our strategy and delivering lasting health impact in Ethiopia and beyond.

We continue to build on our core program areas, leveraging our experience, strong relationships, and proven leadership in advancing health equity in Ethiopia. As we work toward our vision of lasting health change, we remain responsive to the evolving global landscape and committed to ensuring equitable access to quality health services for all.





## Key Research Findings

- The Relationship of Climate Change and Malaria Incidence in the Gambella Region, Ethiopia <https://doi.org/10.3390/cli13050104>
- Groundwater Suitability Mapping in Jimma and Borena Zones of Ethiopia Using GIS and Remote Sensing Techniques <https://doi.org/10.3390/w17091356>
- Assessing the Effects of Menstrual Hygiene, Water, and Sanitation on Girls' Academic Performances in Public Schools, Ethiopia Open Access <https://doi.org/10.2166/washdev.2025.233>
- Gender Equality and Social Inclusion in Relation to Water, Sanitation and Hygiene in the Oromia Region of Ethiopia <https://doi.org/10.3390/ijerph18084281>
- Gender Inequality and the Sexual and Reproductive Health Status of Young and Older Women in the Afar Region of Ethiopia <https://doi.org/10.3390/ijerph17124592>
- Child Marriage Cancellation: Experiences and Implications <https://rb.gy/e3k4ul>
- Perspectives of Young People and Health Workers on Sexual and Reproductive Health and its Services in Bahir Dar, Amhara Region, Ethiopia <https://rb.gy/gvolm5>
- Cost-Effectiveness of Youth Friendly Health Services in Health Post Settings in Jimma Zone, Ethiopia (<https://www.mdpi.com/1660-4601/22/8/1179>)

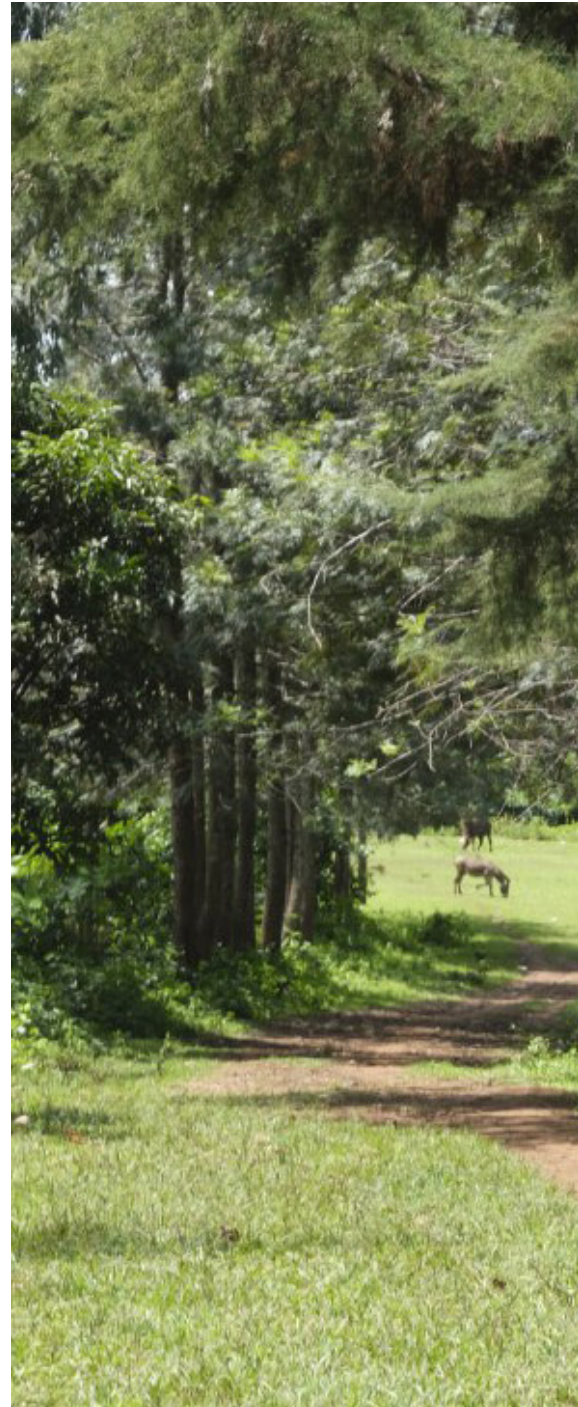
*[This study evaluates the cost and cost-effectiveness of Youth Friendly Health Services implementation in rural health posts in Ethiopia]*

## Video Links

<https://www.youtube.com/watch?v=BsisupIHrTE>

<https://www.youtube.com/watch?v=FaNCryOjZMM>

<https://www.youtube.com/watch?v=EFYfrmaysXc>





# We Thank Our Partners!



Kingdom of the Netherlands



MADE BLUE



THE ELSEVIER  
FOUNDATION



Amref Health Africa in Ethiopia  
Office: +251 116 630 552  
E-mail: info.ethiopia@amref.org  
P.O.Box: 20855 Code 1000 Addis Ababa, Ethiopia

[www.amref.org](http://www.amref.org)  amrefethiopia  @amrefethiopia