



Amref Health Africa in Kenya

# PARTNERS DIGEST

2025 Edition

# OUR **PARTNERS**

Every vaccine delivered,  
Every health worker  
trained, and Every young  
life empowered....

Carried the footprint of Partnership.... **YOURS!**



# 2025 AT A GLANCE



**T**his year, your partnership helped write millions of stories of health across Kenya, one life, one community, one health system at a time.

Every number in this report represents a real person: a mother who welcomed her newborn safely, a young person who took charge of their future, a family that gained access to clean water for the first time.

Together, we are not just delivering services, we are building health systems that listen, respond, and last. Systems that are trusted by the communities they serve and resilient enough to face tomorrow's challenges.

We thank every partner, Government, Philanthropies, Private sector, and Communities, who helped turn vision into reality. This is the impact of true collaboration, measured not just in millions reached, but in futures secured. One life at a time.

With Gratitude,  
Amref Health Africa in Kenya

# IMPACT **VISION 2030**

## **Community-Led Health Systems**

Building sustainable  
Universal Healthcare

## **Quality Care for All**

Making life-saving Primary  
Healthcare accessible to  
every community

## **Women and Youth as Change Agents**

Empowering Africa's  
key populations to lead  
healthier, more prosperous  
lives

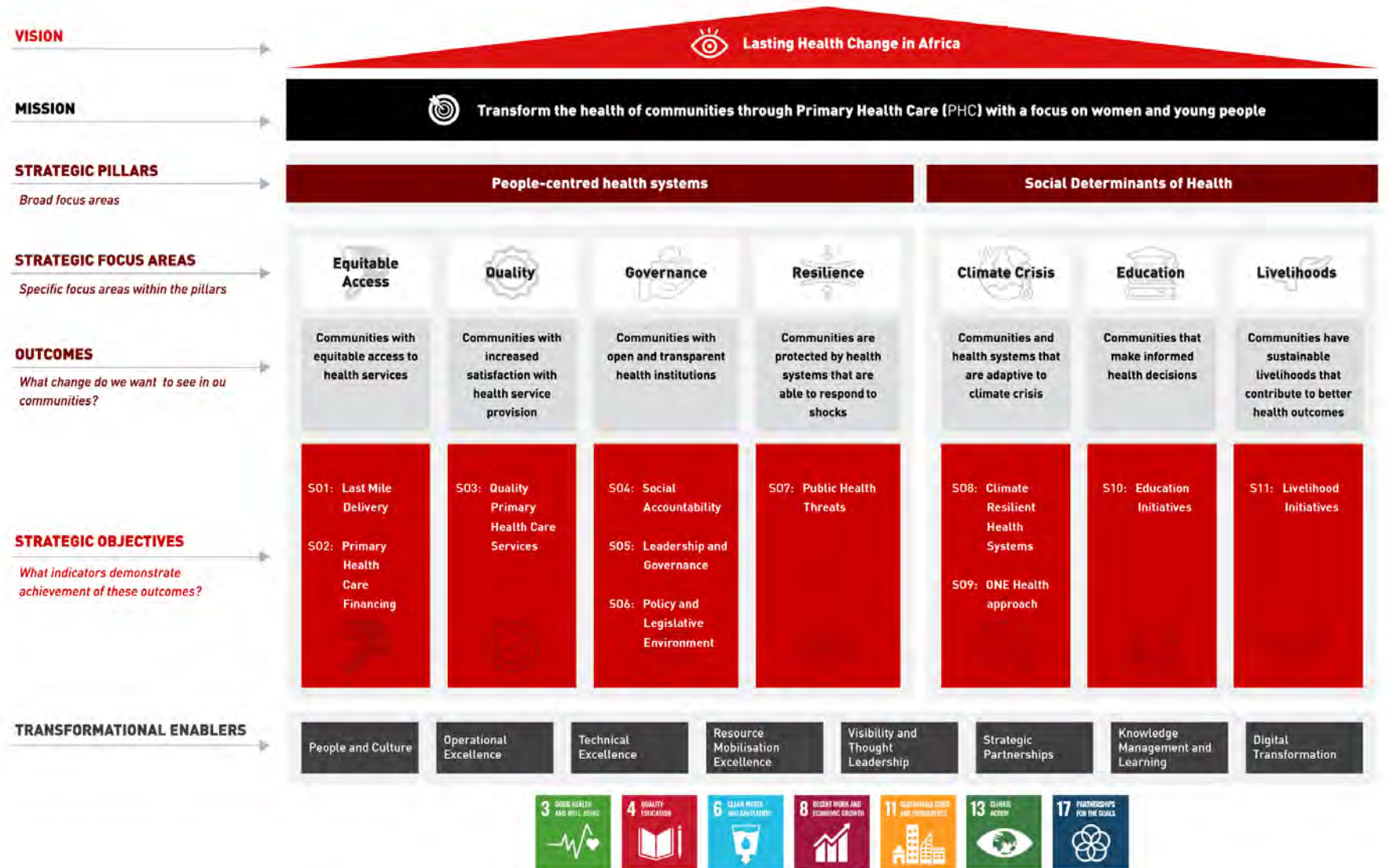
## **Health Beyond Healthcare**

Transforming the social and  
environmental conditions  
that shape wellbeing

## **Africa's Health, Africa's Way**

Driving a continental  
agenda for Lasting Health  
Change, led by Africans

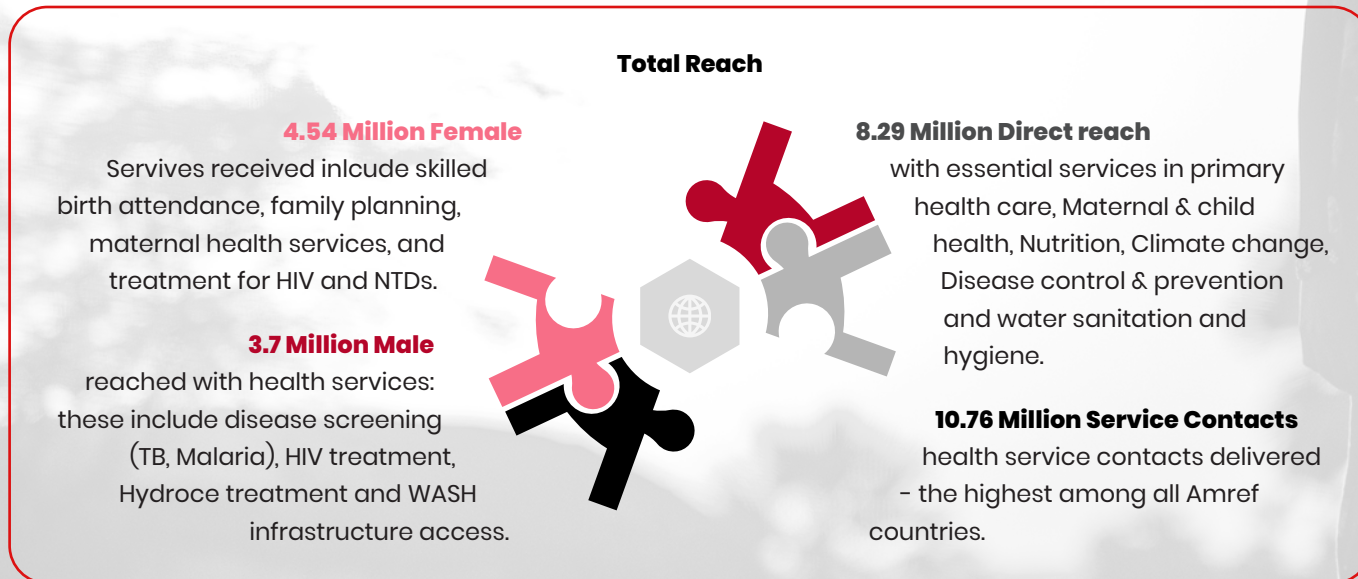
# OUR STRATEGY AT A GLANCE



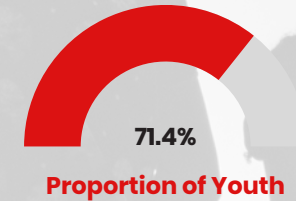
# OUR REACH

## 44 active projects in Kenya across all 47 counties in Kenya

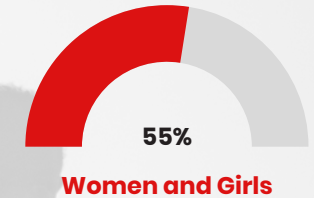
Every service contact represents a point of connection between a person and the health system, a small interaction that contributes to a stronger, more resilient Kenya.



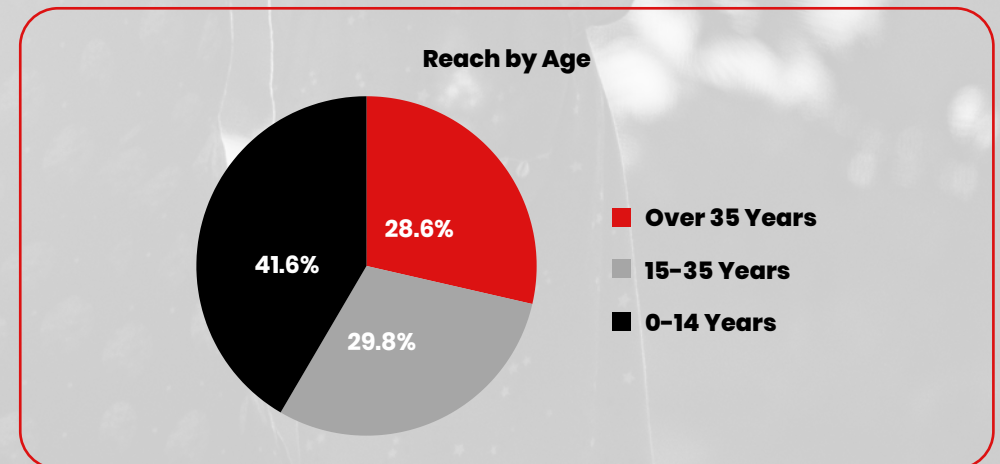
Nearly three out of every four people we reached were young, a generation stepping into their healthiest futures. From maternal health to digital health, learning to clean water access, youth remain at the centre of our impact.



Youth received comprehensive family planning access, life skills training, and targeted disease screening and prevention services



Women and girls received reproductive health services, skilled birth attendance, family planning, and treatment for gender-specific health conditions including fistula and NTDs.



# DID **YOU KNOW?**

Every Dollar invested in  
Amref Health Africa in Kenya.....

Has the potential of a social return  
on investment of **1:68 US\$**









# OUR **BIG BETS**

Every impact captured in this report is the result of collaboration—between governments, communities, funders, and technical partners working toward a shared vision of health for all.

Amref’s Big Bets reflect the areas where these partnerships have translated into measurable change: stronger primary health care systems, safer motherhood, resilient responses to malaria and climate threats, expanded oxygen access, and preparedness for future health emergencies.

Together, these investments tell a story of progress today—and opportunity for deeper partnership ahead.

Amref Health Africa in Kenya has boldly aligned its efforts with the global and the Kenyan Government’s Health Agenda by implementing seven strategic and innovative initiatives. These initiatives, known as our “**big bets**,” demonstrate Amref’s commitment to improving the health outcomes of the Kenyan population, with the baseline year set at 2023 and the target year of 2030.

	<b>Primary Health Care</b>	Catalyse Universal Health Coverage (UHC) by 2026 through optimising functionality and sustainability of Primary Healthcare Networks (PCNs), and integrating comprehensive strategies for skilling, equipping, remunerating, and managing the performance of community health promoters
	<b>Maternal and Newborn Health</b>	Reduce maternal death ratio from <b>355</b> to below <b>70 deaths per 100,000</b> live births and neonatal death rate from <b>21</b> to under <b>12 per 1,000</b> live births by 2030.
	<b>Malaria/ Climate Change</b>	Reduce malaria case incidence by at least 90% by 2030, considering the impact of climate change on its epidemiology.
	<b>Neglected Tropical Diseases and Cholera</b>	Break the transmission and elimination of four Preventive Chemotherapy (PC) Neglected Tropical Diseases (NTDs) endemic in the country: Intestinal Worms ( <i>Soil-Transmitted Helminths</i> ), Bilharzia ( <i>Schistosomiasis</i> ), Elephantiasis ( <i>Lymphatic Filariasis</i> ), and Trachoma
	<b>Non-Communicable Diseases</b>	Reduce by one-third premature deaths from non-communicable diseases through prevention and treatment by 2030.
	<b>Medical Oxygen Ecosystem</b>	Achieve and sustain universal access to medical oxygen across all health facilities by 2030, improving survival outcomes in maternal, child, surgical, and emergency care.
	<b>Global Health Security</b>	Achieve and sustain universal readiness to tackle epidemics across all levels of the health system to protect communities and save lives.

# Primary Health Care

Catalyse Universal Health Coverage (UHC) by 2026 through optimising functionality and sustainability of Primary Healthcare Networks (PCNs), and integrating comprehensive strategies for skilling, equipping, remunerating, and managing the performance of community health promoters.



Funding: **US\$ 10M secured**

Geographic Coverage: **National & all 47 counties**

Levers: **Policy & leadership catalyst; multisectoral integration (social determinants); data & digital intelligence; sustainable domestic financing; Service integration at community level through polyvalent Community Health Promoters. All these levers are applied across all bets.**

Key Innovations: **eCHIS Reporting Assistant (GenAI), & CHUs as a cost centre under SHA**

## Key Milestones (2024/25)

- Supported the establishment of **72 functional PCNs**
- Supported the advancement of PHC Act (2023) regulations to public participation stage. Amref Commitment: **KES 24M**
- Trained **10,000+** CHPs nationally; over **20,000** CHPs trained to date; Enhancing the CHP mobility through the provision of over **1,000 bicycles**
- Supported counties to integrate CHPs into formal payroll and supervision structures
- **2,343** facility-based health workers trained in-service

- Rolled out the Community Health Promoter Entrepreneurship Framework for sustainable community care
- Supported the Scaling the Digital Superhighway with Integrated Referral Loops & AI Solutions like the eCHIS Reporting Assistant (GenAI)
- Convened 30 partners for the CHU4UHC and Aligned action across sectors toward Universal Health Coverage (UHC)
- Provided Technical assistance to MoH Kenya on health financing
- **KES 28.6B** claimed from Social Health Authority for PHC/SHIF funding
- Strengthened Digital Health Agency; deployed Taifa Care Turkana.

## Next Priorities

- Operationalise CHP Entrepreneurship Curriculum in all 47 counties
- Support Scale digital superhighway with integrated referral loops and AI solutions.

# Maternal and Newborn Health (MNH)

Catalyse the reduction of Kenya's national maternal mortality ratio from 355 to less than 70 per 100,000 live births from 2024 to 2030; reduce the national neonatal mortality rate from 21 to less than 12 per 1,000 live births from 2024 to 2030.



Funding: **US\$ 8.7M**

Geographic Coverage: **Turkana, Nyeri, Meru, Narok, Kwale & Kilifi Counties**

Lever: **(i) Clinical packages (Prevention of maternal anaemia; E-MOTIVE for postpartum haemorrhage (PPH) etc) (ii) Digital Intelligence (iii) Accountability enablers (iv) Policy, Regulation, and Leadership Catalysts.**

## Key Milestones (2024/25)

- Deployed, a behavioural model (LEARN) to reengineer maternity and newborn unit teams in referral facilities.
- Advanced Kenya's adoption of the WHO-endorsed E-MOTIVE bundle to combat postpartum haemorrhage.
- Deployed the OPOCUS model with roving labs in Narok, boosting early detection and management of high-risk pregnancies.
- Strengthened MPDSR systems through capacity building and institutional support, driving accountability and timely action on preventable maternal and newborn deaths.

- Enhanced provider capacity and clinical readiness to deliver lifesaving MNH services and commodities.
- **Kilifi County:** 85% reduction in facility-based maternal mortality (*138.6 to 21.2/100,000*), improved Perinatal death rates from 29% to 92%, while facility NMR dropped from 56% to 31%. **Kwale County:** 30% reduction in maternal deaths, 34% reduction in facility-based neonatal deaths (*from 13.08 to 8.57 per 1,000 live births*); **Narok County:** a 30% decline (*from 4.93 to 3.43 per 100 live births*)

## Next Priorities

- Scale E-MOTIVE\* bundle nationally
- Expand On-the-Job Practical Obstetric and Comprehensive Ultrasound (OPOCUS) and roving lab services
- Operationalise Uzazi Salama platform/ Bump buddy
- Advocate replication of RMNCAH legal frameworks in other counties
- Institutionalise MPDSR best practices.

*\*E-MOTIVE = Early detection of postpartum haemorrhage + the WHO MOTIVE first-response bundle: Massage (uterine), Oxytocic, Tranexamic acid, IV fluids, Examination & escalation.*

# Malaria/ Climate Change

Strengthen the climate resilience of PHC systems to help Kenya achieve a ≥90% reduction in malaria incidence and deaths by 2030



Funding: **US\$ 31.3M (Malaria)** secured; **USD 14.09M (WASH)**

Geographic Coverage: **Siaya, Kisumu, Migori, Busia, Kakamega, Kisii, Nyamira, Bungoma, Homa Bay, Vihiga, Narok, Turkana, Kilifi & Kajiado counties.**

Lever: **Community case management of malaria (CCMm); climate and health innovations; research and evidence generation; policy and governance strengthening; data and digital intelligence.**

## Key Milestones (2024/25)

- Malaria incidence reduced by 14.1% nationally (22.98 to 19.74/1,000) 23.8% reduction in confirmed cases in Amref-supported counties
- Economic Impact: This reduction's estimated savings: **US\$9.96–13.76M** nationally, **US\$6.84–9.44M** in supported counties (*Malaria Journal, 2021*)
- Expanded Community Case Management to **354** additional CHUs
- **101** water sources developed reaching **65,000** People

- Constructed gender-responsive, climate-sensitive toilets and bathrooms in **43** schools, benefiting **26,650** learners.
- Initiated design of an AI-driven Early Warning System using climate and vector data to predict malaria outbreaks and guide rapid response.
- Developed County One Health Strategic Plans in Busia and Siaya.

## Next Priorities

- Scale CCMm to Nyandarua, Nyeri, Kirinyaga
- Strengthen private retail pharmacies to provide quality malaria testing, treatment, and reporting services
- Deploy AI-driven Early Warning System for malaria outbreaks
- Launch Pan-African Research & Policy Centre for Digital Health Intelligence on Climate & Health
- Support the institutionalising of climate-malaria curriculum & county One Health plans.

# Neglected Tropical Diseases (NTDs)

Eliminate Lymphatic filariasis, schistosomiasis, soil-transmitted helminths, & visceral leishmaniasis as public health problems by 2030



Funding: **US\$ 6.8M**

Geographic Coverage: **23/47 counties.**

Levers: **Precision public health** (*burden assessment, targeted programming, evidence generation*); **PHC integration** (*mainstreaming NTD services through CHP-led delivery and routine systems*)

Key Innovations: **Household-based routine deworming by CHPs; Integrated digital reporting via eCHIS and KHIS; NTD case mapping for targeted surgery.**

## Key Milestones (2024/25)

- Protected over 6 million people through mass drug administration (>75% WHO coverage)
- Trained 9,603 CHPs on household-based deworming – reached 322,000+ people
- Conducted 158 corrective hydrocele surgeries
- Strengthened lymphatic filariasis surveillance in Busia County through confirmatory laboratory testing and clinical screening across five sub-counties

- Enhanced visceral leishmaniasis (VL) surveillance through training of 168 health workers in ASAL counties
- Expanded integration of deworming into PHC across 12 wards, enabling 9,603 CHPs to deliver household-based deworming. 322,000 people reached.
- Deepened prevention and awareness – 3,470 child-focused educational materials and teacher guides Disseminated in Western Kenya
- Strengthened digital health and surveillance systems through supporting the integration of eCHIS and KHIS.

## Next Priorities

- Strengthen and scale the user case on integration of NTDs into PHC
- Refine the country targets and costing models for eliminating VL, trachoma, and LF.
- Convene a roundtable to strengthen the NTD elimination collaborative and advance resource mobilisation.

# Non-Communicable Diseases (NCDs)

Catalyse the reduction in premature mortality from non-communicable diseases (NCDs) by one-third by 2030

Funding: **US\$ 1.3M**

Geographic Coverage: **Nyeri, Nakuru & Kisumu Counties**

Lever: **(i) NCD prevention campaigns ii) Community-based clinical packages (iii) Digital & referral enablers (iv) Workforce & partnerships (v) Service delivery models**

Key Innovations: **developing AI-enabled NCD risk predictive model, Cascade of Care approach & Patient-Caregiver Companion App for Kenya.**

## Key Milestones (2024/25)

- Scaled up CHP-led screening across 13 Primary Care Networks (PCNs) ; **92,000+** people screened
- Established 39 NCD **+16** mental health support groups
- Trained **556** health workers **+1,214** CHPs with targeted PHC, NCD, and mental health training
- **253** community dialogues, **+325,000** household visits reaching **1.3M** people with integrated messages on hypertension, diabetes, and mental health
- Advanced Sin Tax consultations with MoH for prevention financing that seeks to reduce NCD risk factors.

## Next Priorities

- Finalise **Sin Tax** evidence framework & policy review
- Expand mental health training cascade nationally
- Scale **AI-enabled NCD risk prediction model**
- Support the Ministry of Health to develop **national multi-hazard preparedness framework** for NCD continuity
- Strengthen PHC leadership by building the capacity of family physicians, PHC coordinators, and facility in-charges



# Medical Oxygen Ecosystem

By 2030, achieve and sustain universal access to medical oxygen in 100% of health facilities, up from less than 20% in 2020, to save lives in maternal, child, surgical, and emergency care.



Funding: **US\$ >36M**

Geographic Coverage: **All 47 counties.**

Lever: **(i) Infrastructure investment; (ii) Digital innovation (iii) Regulation & quality assurance (iv) Partnerships**

Key Innovations: **Household-based routine deworming by CHPs; Integrated digital reporting via eCHIS and KHIS; NTD case mapping for targeted surgery.**

## Key Milestones (2024/25)

- Improved oxygen access in level 2 and 3 facilities by Equipping 311 facilities with oxygen piping and manifolds
- Delivered **1.2** million kg of liquid oxygen to **44 facilities**
- Commissioned **124** facilities with operational systems
- Installed **22** PSA plants in priority counties
- Trained **23** engineers, **10** ToTs, **35** PSA plant managers.

## Next Priorities

- Train county biomedical engineers on maintenance
- Scale-up of oxygen piping & manifold installations and commission PSA plants in remote counties
- Develop sustainable financing models for liquid oxygen and PSA maintenance
- Support MOH to develop a national oxygen monitoring system
- Collaboration with AMIU to curate a specialised training course on oxygen systems.

# Global Health Security

Achieve and sustain universal readiness to tackle epidemics across all levels of the health system to protect communities and save lives.



Funding: **US\$ >36M**

Geographic Coverage: **28/47 counties.**

Lever: **(i) Public Health Intelligence (ii) Outbreak Response & Communication (iii) Policy, Planning & Governance (iv) Professionals & People Development.**

## Key Milestones (2024/25)

- Increased immunisation coverage and outbreak containment, reducing morbidity and mortality risks
- Administered **20,737** HPV doses, **6,866** childhood immunisation doses, **94** rabies doses
- Supported the launch Kajiado County One Health Strategic Plan 2025–2030
- Trained **90** healthcare workers and **15** Trainers of Trainers on 7-1-7 outbreak response framework.
- Contributed to the Decision-Making Tool for Public Health Emergencies (DMT-PHE)

## Next Priorities

- Support the operationalisation Kajiado One Health Strategy
- Scale-up community engagement, vaccination campaigns, and surveillance of outbreak cholera and mpox
- Strengthen lab capacity and oversight in 12 counties
- Train 86 laboratory personnel, on visceral leishmaniasis drug resistance.
- system
- Collaboration with AMIU to curate a specialised training course on oxygen systems.

# Education and Early Childhood Development

Scale community-led Early Childhood Development in informal and last-mile communities—integrating into Primary Health Care to secure survival and lifelong potential in the first 1,000 days.



Funding: **US\$ 6.1M**

Geographic Coverage: **13 counties.**

Levers: **Multi-sectoral response—adoption of the Nurturing Care Framework, Promotion of developmental monitoring and Mental Health and Psychosocial Support and Social Emotional Learning in refugee and host communities**

## Key Milestones (2024/25)

- Supported adaptation of Caring for Caregiver package for the Kenyan Context
- Supported integration and roll-out of Nurturing Care for ECD in the CHPs Training Curriculum in 10 counties
- Developed play-based mental health and psychosocial support and social emotional learning manual for children 0-3 years and caregivers in refugee and host communities.
- Strengthened national and county coordination mechanisms at the national MoH - Newborn and Child Health Section and in 3 Counties

- Supported the adaptation of Care for Child Development package for healthcare workers
- Trained **150** healthcare workers in Nairobi & Turkana Counties.

## Next Priorities

- Integrate Nurturing Care for ECD in Primary Health Care in 12 Counties
- Support roll-out of the Care for Child Development and Caring for Caregiver packages in Isiolo, Nairobi, Nyamira & Turkana Counties
- Generate evidence on Nurturing Care for ECD in PHC
- Support development of nurturing care for ECD in PHC action plans for Nairobi & Nyamira Counties
- Roll-out play-based Mental Health and Psychosocial Support and Social Emotional Learning interventions in Turkana & Nairobi Counties.

# OUR SUSTAINABILITY PLEDGE

## *Where \$1 Becomes \$68 in Lasting Change*

Every number tells a story. And our most powerful one is this: **for every \$1 invested in our community-led health model, \$68 of measurable social value is created.**

It begins with a simple belief: lasting health is built by communities. At Amref, we move beyond time-bound programmes to create permanent capacity. This means training over **23,000 Kenyan health workers** who remain in their villages as trusted, first-line caregivers. It means partnering with **grassroot civil society organisations** so that health decisions are shaped by local wisdom and accountability. And it means constructing Climate resilient WASH infrastructure designed to endure drought and flood, foundations of health that stand firm no matter what the future brings.

The result isn't just a healthier mother or a safer birth, it's a stronger local economy, a more confident youth population, and a health system that works because it's owned by the people it serves. This 68:1 return is more than efficiency. It's proof that the most sustainable health solutions aren't shipped in, they're grown locally, nurtured by partnership, and measured in lives transformed for generations.

Your investment doesn't just fund a programme. It builds a future.



# OUR PARTNERS

The Journey to Impact

Every milestone reflects a shared commitment to dignity, equity, and stronger health systems. To our government partners, funders, private sector allies, civil society, and communities – THANK YOU for walking with us.

We look forward to shaping Kenya's next chapter with you in 2026.





# THANK YOU

We look forward to writing the next chapter with you in **2026**.

Read **MORE** & Connect with **US**

[www.amref.org/Kenya](http://www.amref.org/Kenya) | [partnerships.KE@amref.org](mailto:partnerships.KE@amref.org)

